



Data Center Campus

BLÖNDUÓS – SITE LOCATION
ICELAND



REGION ASSOCIATION
NORTH WEST ICELAND

Published by SSNV

Blönduós - 2019

www.ssnv.is

Contacts

Valdimar O Hermannsson, Mayor of Blönduós

E-mail: valdimar@blonduos.is

Hnjúkabyggð 33

540 Blönduós

ICELAND

TEL.: (+354) 455 4700

Webpage: www.blonduos.is





Data Center Campus

BLÖNDUÓS – SITE LOCATION
ICELAND



REGION ASSOCIATION
NORTH WEST ICELAND



Summary

Blönduós is a thriving municipality in the north of Iceland. The location is ideal for data centres. There is land readily available and lots ready for construction within a few weeks' time. The area has a cool climate and is not susceptible to geologic hazards such as earthquakes and volcanic eruptions. The site has access to a variety of water cooling options, and the air is of excellent quality. One of the main advantages is access to green energy provided by the Blanda hydroelectric power station and a connection to the main electrical grid.

The project enjoys strong local support and is in accordance with regional development policies as well as the Icelandic Government's new Climate Action Plan, focusing on the utilisation of renewable energy.



Why Blönduós?

Green energy - Blanda Hydroelectric Station in close proximity (30 km)

Site ready for construction

Diverse cooling options

No seismic activity in the region

Cool area (average air temperature low)

Light snow area

A data centre in Blönduós in accordance with the policy of the Icelandic Government to bring energy-intensive industry to the region





Statement from the Mayor of Blönduós

Blönduós is a thriving community with all the infrastructure necessary for the establishment of a data center.

Despite its comparatively small size, Blönduós offers a remarkably diverse range of goods and services. But businesses and services are only one aspect of our town. The area also features a wide range of activities and recreational opportunities, including the specialty of the region: salmon fishing.

In 2018, the first data center was built in Blönduós. This has already had a significant and beneficial impact on the area and the inhabitants of this region.

We are glad to see how the current project develops and look forward to new collaborations in the future!

The community of Blönduós welcomes you to our town with open arms.



Blönduós area

Population

Blönduós area:

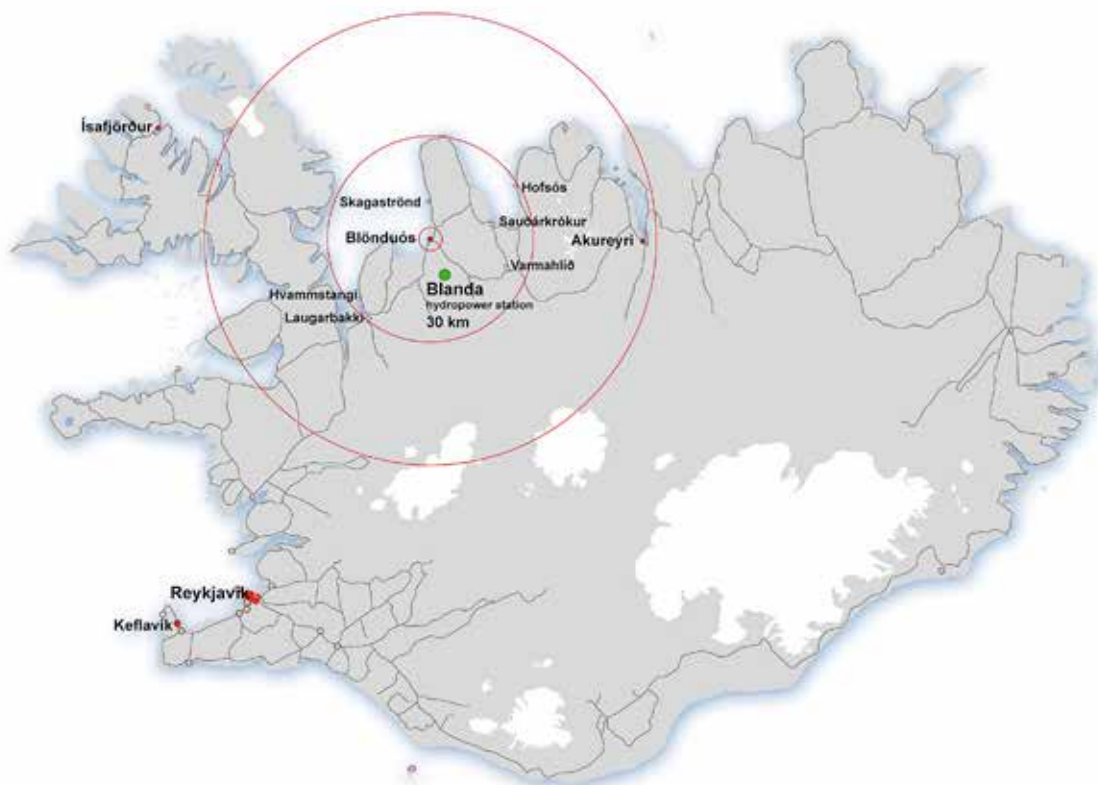
2.000.

50 km radius:

7.500.

150 km radius:

30.000.



Distance to Blönduós from:

Keflavík – 285 km, Reykjavík – 244 km, Akureyri – 144 km, Ísafjörður – 414km



Electric connections

Blanda Hydroelectric station

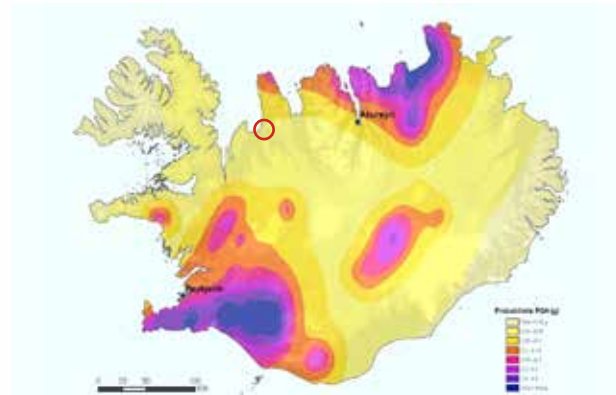
Blanda Hydroelectric station is a 150 MW hydroelectric power plant with excellent reliability. It is owned and operated by Landsvirkjun, the National Power Company of Iceland. A 30 MW expansion is currently being prepared. Blanda Station is located 30 km from site.



Seismic info:

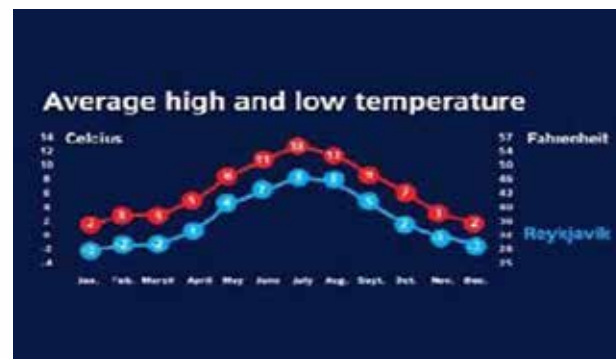
The bedrock in the Blönduós region is old and therefore outside the seismic zone in Iceland

- no risk of eruption
- no risk of volcano ash
- no risk of earthquakes



Climate – free cooling

Mean annual temperature in Blönduós is 1,5 degrees lower than in the capital region (in the southwest of Iceland)



Future site

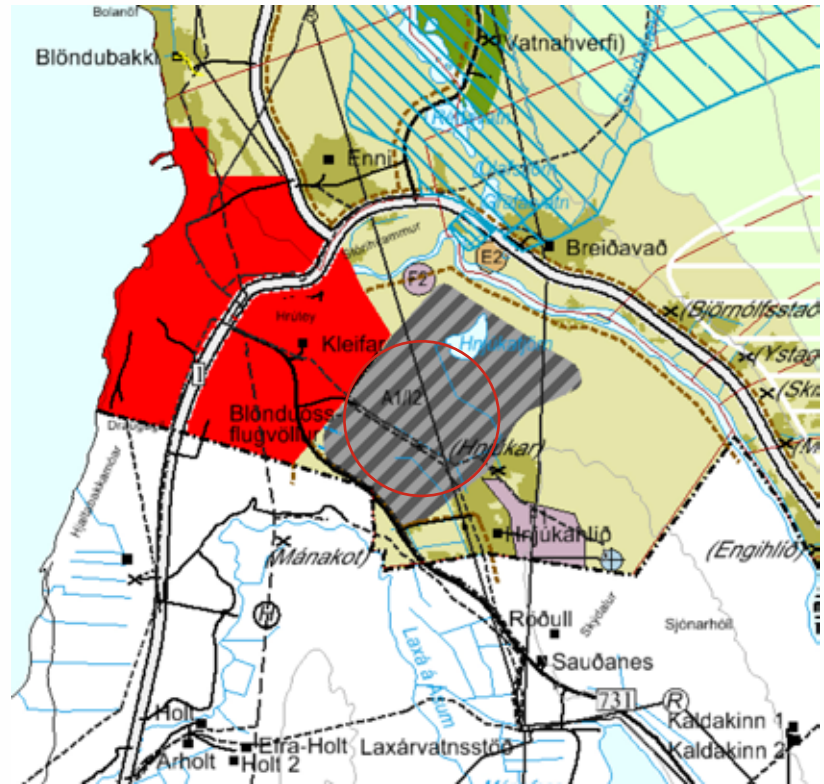
Size: 150 hectares of land

Land owned by the municipality

More land adjacent to the principal site is available

New general plan ready and approved by the Ministry of Environment

Possible to start groundwork operations now



Land development / general plan



Air shot of current data center location

Current site

Size: 10 hectares

Elevation: 40-50 m.a.s.

Distances:

Blanda Power Plant 32 km

Switchyard 5 km



Land development plan

